



MLPB

ADVANCING HEALTH THROUGH JUSTICE

April 28, 2023 Newsletter

BRIDGING DIVIDES

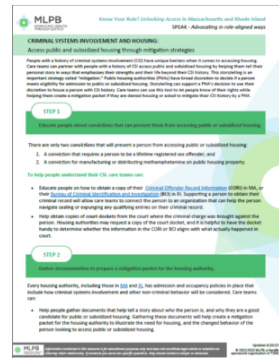
In recent months, MLPB Law & Policy Consultant [Nedhi Teixeira](#) has been responsible for two amicus briefs submitted in connection with two eviction cases in Massachusetts. One of the cases, *Jason Dacey v. Sandy Burgess*, has been decided — for an analysis of that decision, check out Nedhi's recent blog post.

[Read the blog post](#)

NEW! NEW RESOURCE

Do you work with people who have encountered barriers finding housing due to a history of criminal systems involvement (CSI)?

If so, check out our [newest one-pager](#) on helping people with a history of CSI access public and subsidized housing. Written by MLPB Law & Policy Consultant [Marsophia Ducheine](#), this resource gives care team members concrete steps that people can take to understand their CSI, gather documentation, create a personal statement, and more!





UNLOCKING ACCESS

We warmly welcome our two newest Rhode Island partners: the Care New England Family Care Center in Pawtucket and Toll Gate Pediatrics, a Lifespan Coastal Medical practice in Warwick. These two practices are the first in Rhode Island to adopt the DULCE model, and are doing so with the guidance from our long time partner [CTC-RI](#).

[Developmental Understanding and Legal Collaboration for Everyone](#) (DULCE) is an innovative model of care that addresses social determinants of health, promotes the healthy development of infants, and provides support to parents in the early childhood context. MLPB has been involved with the creation of the nationwide DULCE model since its inception, but this is MLPB's first opportunity to be the legal partner for local DULCE sites!

SPOTLIGHT ON: RI



It's time for the 5th annual RI Life Index ❤️. Led by [BCBSRI](#) and [Brown School of Public Health](#), MLPB is proud to be a part of this year's RI Life Index — our Partnership & Project Manager [Jeff Gilbert](#) will represent us on the Coalition. The RI Life Index compiles information from confidential phone surveys across Rhode Island to help the Coalition learn how to build healthier communities across the state. Learn more here: www.rilifeindex.org.



DIGITAL DIGEST

The White House announced that the Public Health Emergency (PHE) that was called in 2020 to combat the COVID-19 pandemic, will [end](#) on May 11, 2023. This change will have far reaching consequences for low-income families throughout the country.

One of the most important public health features of the PHE was that it required continuous Medicaid coverage without recipients needing to go through eligibility recertification. But that is changing. As of April 1, state Medicaid agencies have begun to unwind these continuous Medicaid coverage provisions. Up to 15,000,000 Medicaid subscribers will likely lose coverage during this yearlong process. Some estimates say that close to half will lose coverage not because they are no longer eligible, but for administrative reasons.

Medicaid is much more than essential medical care coverage — it is also a primary access point to address health related social needs and achieve health equity. MLPB

Rhode Island. We are also keeping our [Digital Digest](#) updated about the end of PHE.

Visit MLPB's Digital Digest



MLPB Law & Policy Consultant [Nedhi Teixeira](#) recently lead a training on “Housing Stability Fundamentals” for an Essentials of Public Health class at the Boston University School of Medicine.

Interested in learning more about our trainings or partnership opportunities? Please reach out to [Jeff Gilbert](#), MLPB Partnership & Project Manager.



Care planning, delivery and financing should systemically account for people's legal rights, risks, and remedies. MLPB equips communities of care with legal education and problem-solving insight that fosters preventions, health equity, and human-centered system change. Through training, consultation and technical assistance, we help teams and organizations better connect people to the resources and legal protections they seek.

MLPB is a fiscally sponsored organization of [TSNE](#).