



MLPB

ADVANCING HEALTH
THROUGH JUSTICE

June 2022



**MLPB will be presenting at the
30th Annual**

A View from all Sides Conference:

*Building Resilience and Preventing Burnout for Family
Support Professionals*

The Children's Trust is the host of the **30th Annual A View from All Sides**, New England's premier family support conference. This two-day conference brings together professionals across Massachusetts for an in-depth examination of innovative theories and promising practices in family support and parenting education.

MLPB is honored to be presenting on:

***Legal Information and Rights Education:
A Pioneering Element of Family Support***

To learn more about the Children's Trust, please visit childrenstrustma.org.

We hope to see you there!

**Visit MLPB at The Root Cause Coalition's
7th Annual National Summit**

[Achieving Health Equity: What Are You Prepared To Do?](#)



[The Root Cause Coalition Annual National Summit](#) will be hosted in Minneapolis, Minnesota from **October 2-4, 2022**.

MLPB will be there with colleagues from our *Building Legal Problem-Solving Capacity in the Early Childhood Sector [Learning Community](#)* – we hope to see you there!

[Learn more or register here](#)



[Law & Policy Consultant](#)
[\(licensed attorney\) - MA-focused](#)

Application deadline = **June 30**

This new colleague will partner with communities of care in Massachusetts and nationally, supporting MLPB's refinement of our *team-facing legal partnering* innovation.

Learn more or apply here!



... to our 2022 summer interns!

Olivia Cella



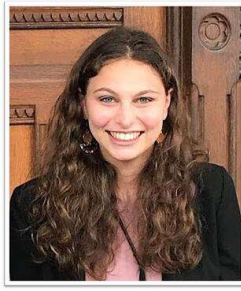
I am a rising senior at [Colby College](#) with a double major in Anthropology and Spanish and a minor in Religious Studies. I have previous experience serving individuals and families with disabilities at Boston nonprofit organizations [Vinfen](#) and [Bay Cove Human Services](#). At MLPB, I am excited to shift my work from a human services lens to a legal perspective regarding sociocultural issues such as housing insecurity, health care, immigration status, sexual violence, and the marginalization of individuals with disabilities.

Emily Levin



Currently, I'm a rising second-year law student at [Boston College School of Law](#). In 2021, I graduated from Cornell University with a B.Sc. in Development Sociology. I also minored in Demography, Inequalities Studies: Health Equity, and Law & Society. At Cornell, I became passionate about the social determinants of health and the importance of local government involvement to achieve equitable change. At MLPB, I am excited to learn about how legal advocacy, policy, public health, and cross-sector partnerships can be leveraged together to work towards community health.

Annika Mathias



I'm a rising junior at [Wellesley College](#) interning at MLPB through the [Lumpkin Summer Institute for Service Learning](#). As a double major in Political Science and Peace and Justice Studies, I'm particularly interested in legal advocacy surrounding immigration, housing, reproductive justice, and racial inequities in the criminal justice system. At Wellesley, I participate in student-run theatre, House Council, and Wellesley Democrats. I'm excited to spend the summer delving into the specifics of health-related public policy while learning how to apply multilevel, comprehensive approaches to complex structural issues.



Access to Justice & Health

- [Hear Ye, Hear Ye: Accessing Justice In The Digital Age](#) (*The Boston Globe*, Jun. 5, 2022)

Employment, Income Supports & Health

- [In Older Americans, Rising Debt May Adversely Affect Health](#) (*The New York Times*, Jun. 6, 2022)
- [High Job Flexibility And Paid Sick Leave Increase Health Care Access And Use Among US Workers](#) (*Health Affairs*, June 2022) *Subscription required*
- [Class, Employment, And The US Health Care System](#) (*Health Affairs Forefront*, May 25, 2022)

Food Security & Health

- [Nearly One In Three Adults In Mass. Are Struggling To Get Enough Food To Eat, Study Finds](#) (*The Boston Globe*, Jun. 6, 2022)
- [With Free Lunch Cutoff Looming, Advocates Seek 1-Year Extension](#) (*The Boston Globe*, Jun. 5, 2022)
- [As The Baby Formula Crises Worsens, It's Also Magnifying Disparities In The U.S.](#) (*NPR*, Jun. 2, 2022)
- [Patterns Of Food Security And Dietary Intake During The First Half Of The Child Tax Credit Expansion](#) (*Health Affairs*, May 2022) *Subscription required*
- [Opportunities To Improve Food Equity And Access In Massachusetts](#) (*The Greater Boston Food Bank*, 2022)

Housing & Health

- [If Housing Is A Health Care Issue, Should Medicaid Pay The Rent?](#) (*The New York Times*, Jun. 14, 2022)
- [The Long Emergency Of Homelessness](#) (*The New York Times*, Jun. 14, 2022)

- [Assessing State Eviction Prevention Policies In Response To COVID-19](#) (*Eviction Lab*, Jun. 10, 2022)
- [Direct Cash Transfers Can Deliver Housing Assistance More Efficiently And Equitably](#) (*Housing Matters*, May 25, 2022)

Immigration & Health

- [A Federal Law Requires Translated Voting Ballots, But Not In Arabic Or Haitian Creole](#) (*NPR*, Jun. 26, 2022)
- [R.I. Poised To Provide Driver Privilege Cards To Undocumented Residents](#) (*The Boston Globe*, Jun. 21, 2022)
- [Supreme Court Rejects Bond Hearings For Immigrants Facing Deportation](#) (*Los Angeles Times*, Jun. 13, 2022)
- [Mass. Lawmakers Override Baker Veto, Allow Driver's Licenses For Residents Without Legal Immigration Status](#) (*The Boston Globe*, Jun. 9, 2022)

Substance Use & Health

- [Research To Move Policy — Using Evidence To Advance Health Equity For Substance Use Disorders](#) (*The New England Journal of Medicine*, Jun. 16, 2022)
- [Advocates For Safe Consumption Sites In Mass. Find Hope In Shifting Political Winds As Overdose Deaths Soar](#) (*The Boston Globe*, Jun. 13, 2022)
- ['It's Pretty Terrifying': Mass. Opioid-Related Overdose Deaths Surged To An All-Time High Last Year](#) (*The Boston Globe*, Jun. 8, 2022)

Utilities, Water & Health

- [Thousands Of People In New Hampshire May Still Be Drinking Polluted Water, Years After The Largest Contamination In State History](#) (*The Boston Globe*, Jun. 5, 2022)

Care planning, delivery and financing should systematically account for people's legal rights, risks and remedies. MLPB equips communities of care with legal education and problem-solving insight that fosters prevention, health equity and human-centered system change. Through training, consultation and technical assistance, we help teams and organizations better connect people to the resources and legal protections they seek.

At a household level, this capacity-building support disrupts the trajectory of a social, economic or environmental need into a legal — and health — crisis. At a population level, this work cultivates communities of care as partners in system and policy change.

MLPB is a fiscally sponsored organization of [TSNE](#).

Information contained in this newsletter is for educational purposes only and does not constitute legal advice or establish an attorney-client relationship.

Connect with us



Mailing Address: MLPB c/o TSNE, 89 South Street, Suite 700, Boston, MA 02111

[Unsubscribe](#) [Manage preferences](#)